

From: Lenhart, Laura <lalenhart@pa.gov>
Sent: Thursday, August 20, 2020 3:08 PM
To: Slippery Rock Township <srtwp@srtwp.com>
Subject: Spotted Lanternfly Information

Greetings,

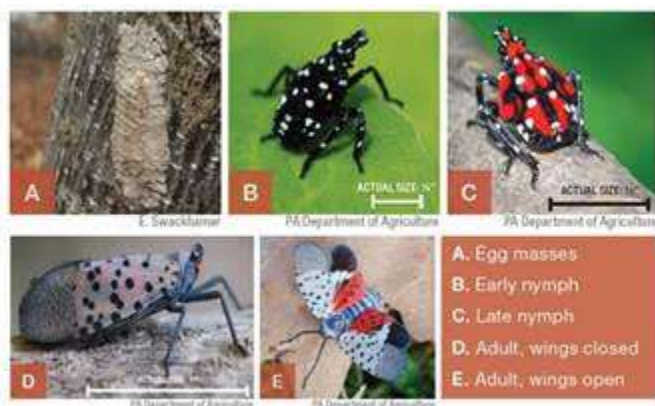
We are reaching out to you to provide information about Spotted Lanternfly (SLF), an invasive insect which was introduced into Pennsylvania (PA) in 2014 and has spread into [26 counties](#).

This pest poses a significant threat to important agricultural commodities including grape, hardwood, fruit trees, landscape and nursery products that contribute billions of dollars annually to PA's economy.

But SLF is not just a concern to agricultural and horticultural professionals – it also poses significant quality-of-life frustrations for all residents. The large populations and habits of SLF can force even the most ardent nature lovers to stay inside. When feeding, SLF excrete a sticky waste, coating everything below them. This waste encourages the growth of black-colored sooty mold on plant materials and hard surfaces like decks and furniture.

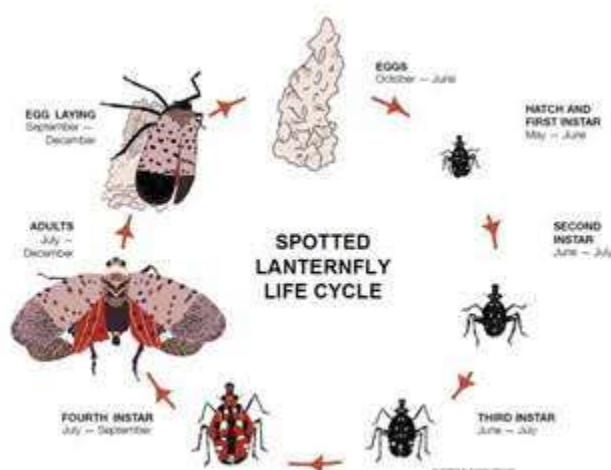
To protect the state's economy and residential quality of life, the PA Department of Agriculture issued an Order of Quarantine and Treatment to stop the movement of SLF to new areas and to slow its spread within the quarantine area. While your municipality is not in a quarantined county, raising awareness of the pest is a great way to protect against new infestation and inadvertent spread while working or travelling in an infested area.

- Know how to "Spot it, Destroy it, and Report it".
 - Visit:
 - extension.psu.edu/spotted-lanternfly
 - [Know the life stages:](#)



- And when to look for each life stage:

*** Adults are present now! ***



- Whether inside or outside the quarantine, everyone is encouraged to report sightings of SLF using the [online SLF reporting tool](#) or by calling 1-888-4BAD-FLY (1-888-422-3359).
- Inspect deliveries from quarantined areas for SLF life stages.
- The SLF Quarantine Order requires **all agricultural and non-agricultural** businesses, agencies, and organizations whose operations require the movement of any regulated articles, such as products, vehicles or other conveyances, within or from the quarantine to obtain a **free SLF permit**.
- Visit agriculture.pa.gov/spottedlanternfly for more information.

To protect neighbors, communities, the agriculture industry and Pennsylvania's business vitality, everyone needs to be aware of the SLF threat and how to utilize best management practices in their daily activities to avoid spreading SLF.

Help stop the spread of the Spotted Lanternfly by sharing information with your municipality's residents and businesses.

Please reach out to us if you have any questions.

Thank you.

PA Spotted Lanternfly Program Team